

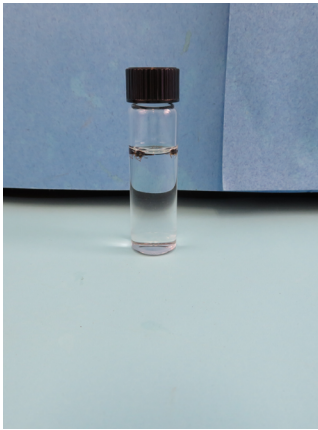
Submitting Insect Samples

Care should be taken to package insects so that they arrive unbroken. Be sure to separate and label the insects if two or more are included in the same package and provide appropriate information on each.

Samples related to health problems (suspected biting insects)

NOTE: This type of sample must be submitted in a small leakproof vial/bottle in 70% alcohol (isopropyl). The sample must contain only the insect, nothing else. We do not accept articles of clothing or sticky traps for insect identification. We cannot diagnose signs or symptoms on people or animals from photos.

Good Examples



Top of vial with leak proof plastic tab



Leak proof vial filled with 70% alcohol (rubbing alcohol)



Acceptable vials with 70% alcohol.

Bad Examples



Not a leak proof vial filled with 70% alcohol



Live bed bug in a none leak proof vial without 70% alcohol.



Only send 1 type of insect per vial.



Take care not to smash your sample.



Glue traps will not be accepted!

Tiny and/or Soft-bodied Specimens

Aphids, mites, thrips, caterpillars, grubs, spiders, etc. should be submitted in a small leakproof bottle or vial of 70 percent alcohol. Rubbing (isopropyl) alcohol is suitable and readily available. Do not submit insects in water, formaldehyde or without alcohol as they will readily ferment and decompose.

*Grubs and caterpillars must be prepared before preservation to prevent discoloration. Drop them into gently boiling water for about 30 seconds (never microwave them!) before placing in vials of rubbing alcohol.

Hard-bodied Specimens

Flies, grasshoppers, cockroaches, wasps, butterflies and beetles can be submitted dry in a crush-proof container. Do not tape insects to paper or place them loose in envelopes.

We do not accept articles of clothing that have bugs on them as samples.

It is very important to include as much information as possible when submitting a sample.

- Where and when the sample was collected?
- Why was the sample collected?
- What was the insect doing?
- What information is requested?

All this information and whatever else you can think of will help with the overall diagnosis/ID.



Use a camel hair brush that has been dipped in alcohol or a tweezers to help get small insects into a leak proof vial.



Do not tape insect to paper or cloth.

To submit physical samples goto <https://ag.purdue.edu/btny/ppdl/Pages/default.aspx> and click on the Submit a Sample tab in the upper right hand corner of the page. Then choose Physical sample and download form **PPDL-1-W** which is located near the top of the page.

Digital Samples

Good Examples



Multiple views are helpful.



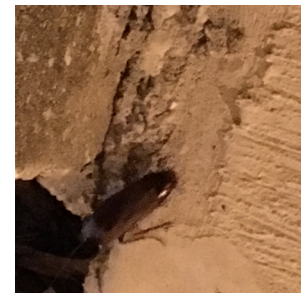
A size guide with photos is always helpful!
A coin, ruler or pencil works great.

Bad Examples



In focus.

Photos that are not close up are not valuable. There is a fine line between close-up and blurry.



Not in focus.

To submit digital samples goto <https://ag.purdue.edu/btny/ppdl/Pages/digitalimages.aspx> and choose **Insect or Anthropod**. Fill out the form and upload up to 10 high resolution pictures.